

# FALL

## LAWNCARE & WINTERIZATION TIPS

Though spring is often seen as the most critical season for lawn care, fall can actually have just as much – if not more – impact on the long-term health of your lawn. The following tips from turfgrass researchers will help you prepare your lawn for winter so it will be lush and green come spring.

### HOW TO INTERSEED FOR A DENSE, HEALTHY LAWN COME SPRING

Interseed regularly – in fall and early spring – to fill in weak or worn spots and help keep your lawn vigorous. For best results, follow these steps:

#### 1 RAKE



#### 2 AERIFY



#### 3 FERTILIZE



#### 4 INTERSEED

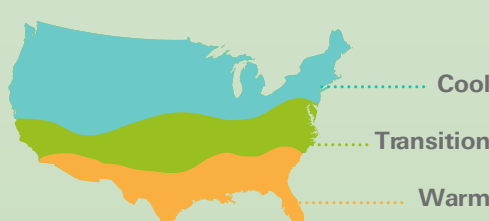


#### 5 WATER



### HOW TO SELECT GRASS SEED

#### 1 Determine your growing region



#### 2 Consider your planting conditions and choose seed



#### 3 Read seed labels

ABC GRASS SEED COMPANY Sun & Shade Mixture			
Percent	Variety	Germ	Origin
34.73%	APPLE PERENNIAL RYEGRASS	90%	OR
33.78%	STELLAR PERENNIAL RYEGRASS	90%	OR
15.25%	ORBIT CREEPING RED FESCUE	85%	OR
15.15%	RADAR CHEWINGS FESCUE	85%	OR
0.10%	CROP		
0.99%	INERT		
0.00%	WEED		
NOXIOUS WEED SEED: NONE FOUND			

TESTED: JULY 2019  
NET WT: 20 LBS (9.07 KG)  
LOT #: 65-ABCGSC-4

Ensure seed blend contains species that will thrive in your planting site conditions

Avoid products with noxious weed seed, or products labeled as "Variety Not Stated"

Purchase certified seed tested in the last six months, use within 12 months of the date tested

## WEEDING-OUT COMMON LAWN MYTHS

**Spring is the best time for lawn care**

**FALSE!**

The "lawn season" should actually be seen as beginning in September. In the fall, grass starts storing up nutrients and moisture in preparation for the dormant winter months ahead. Steps you take now will set you up for success next spring and summer.

**Fall is too late and too cold for planting**

**FALSE!**

Lawns in the warm zone require few winterization measures, but for homeowners in the transition and cool zones, fall is the perfect season to fertilize, aerate and reseed any thin or bare patches.

**Fall seeding is only for those in cool zones**

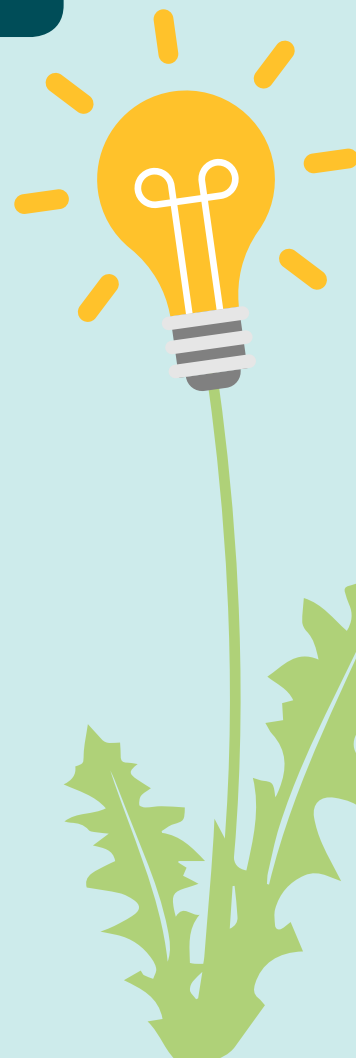
**FALSE!**

Warm zone homeowners can also consider overseeding their warm-season turf with cool-season grass seed in the fall. The cool-season grass will thrive until the warm-season grass turns green again in the spring, ensuring year-round color.

**I only need to fertilize in the spring**

**FALSE!**

Cool-season grass should be fertilized primarily in the fall. Late-fall nitrogen application promotes good root development, enhances storage of energy reserves and extends color retention in cool-season lawns.



## 5 STEPS TO LAWN WINTERIZATION

#### 1. Lower your mower.

It is best to keep your grass shorter in the fall. Cut your lawn at least 1 inch shorter than normal.

#### 2. Don't leave the leaves.

It's important to mow over or rake away fallen leaves to avoid suffocating the grass.

#### 3. Clean up.

Remove items from the lawn, like furniture or toys, since anything that sits on your grass all winter can create a dead spot.

#### 4. Winterize your irrigation system.

If you live in an area where the frost level extends below the depth of your irrigation pipes, be sure to shut off the water to the irrigation system and drain all the pipes before the first freeze.

#### 5. Prep for spring.

Tune up your mower and sharpen the blades so it's ready to go come spring.

### THANK YOU

to our academic contributors for sharing their valuable expertise:

**Cale Bigelow, Ph.D.**, Purdue University

**Alec Kowalewski, Ph.D.**, Oregon State University

**Aaron Patton, Ph.D.**, Purdue University

**Geoffrey Rinehart**, University of Maryland, U.S. National Arboretum

**Clint Waltz, Ph.D.**, University of Georgia

**GRASS SEED USA**

For more information on responsibly growing and maintaining a natural turf lawn, visit

[www.WeSeedAmerica.com](http://www.WeSeedAmerica.com)

@WeSeedAmerica

